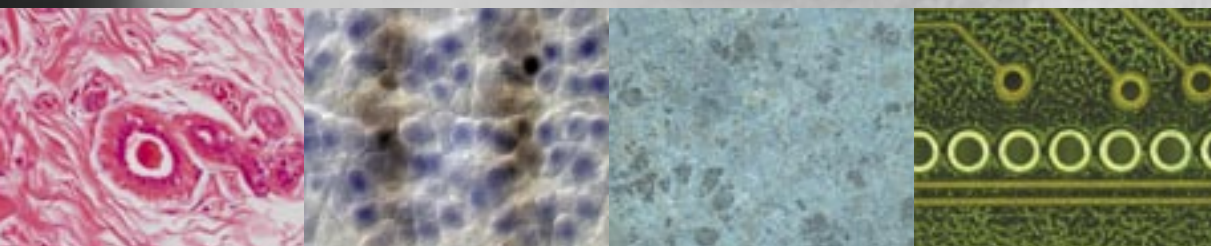


*it's time to change your point of view*



## High resolution and fast – ProgRes® CF<sup>scan</sup>

The new **ProgRes® CF<sup>scan</sup>** – the ideal camera when high resolution and speed are essential. It is suitable for each contrast method in light microscopy, even for demanding applications with weak light signals.

Images up to 4080 x 3072 pixel are generated due to high-precision Microscanning Technology out of the cooled 1.4 mega pixel color sensor. Various recording modes perfectly adjust the resolution of the camera to your microscope. The fast live image in full sensor resolution offers best operation conditions.

An analogue gain increases the dynamic and thus the light sensitivity of the sensor – hence even difficult specimen are reproduced in exact detail. The 14 bit digitization next to the sensor is an important pre-requisite for handling both finest color nuances and noise-free high contrast images. Of course, the camera can be triggered.

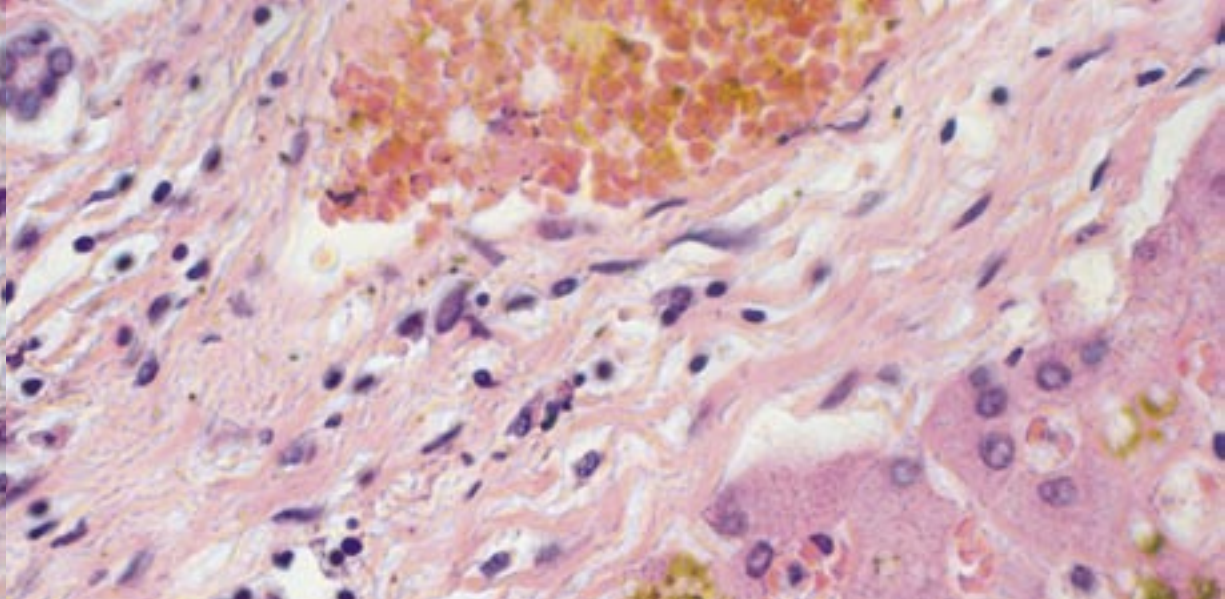
Reliability, stability and easy integration in any working environment is ensured by the universal interface concept of **ProgRes® CF<sup>scan</sup>** with FireWire®, C-Mount and Twain PlugIn. The user-friendly **ProgRes®** Capture Software is included in the scope of delivery.

### ProgRes® CF<sup>scan</sup>

- *Highest resolution by Microscanning.*
- *Excellent 42bit color depth.*
- *High speed live image.*
- *Analogue gain for high dynamic.*
- *Switchable cooling for noise free images.*
- *Universal interface concept*
- *User-friendly capture software.*



**ProgRes®**  
CF<sup>scan</sup>



### Main application areas:

- Genetics
- Microbiology
- Pathology
- Histology
- Hematology
- Cytology
- Zoology
- Quality control
- Geology
- Chemistry
- Forensics

## Technical Data

<b>CCD Sensor</b>	2/3" 1.4 Mega pixel Progressive Scan CCD Image Sensor Typ: Sony ICX285AQ Active Area: 8.8 x 6.6 mm <sup>2</sup>	
<b>Pixel array</b>	1360 x 1024 Pixel	
<b>Pixel size</b>	6.45 x 6.45 µm	
<b>Read-out frequency</b>	Switchable: 12 MHz and 24.5 MHz	
<b>IR cut-off filter</b>	Hoya C-500S	
<b>Dynamic range</b>	ca. 66 db / typical: >2000:1	
<b>Digital output</b>	14 bit RGB	
<b>Exposure time</b>	Up to 300 s	
<b>Gain</b>	Analogue 1x to 8x	
<b>Image refresh rate</b>	Up to 51 fps	
<b>Image resolution</b>	<b>Programmable Resolution</b>	
	272 x 204 (5x Binning)	680 x 512 (HFRM)
	340 x 256 (HFRM)	1360x1024 (1shot)
	453 x 340 (3x Binning)	4080 x 3072 (9shot)
<b>Cooling</b>	Peltier-Element and fan (switchable)	
<b>Digital interface</b>	FireWire <sup>®</sup> IEEE1394a (power & data)	
<b>Optical interface</b>	C-Mount (0.63x TV Adaptor recommended for microscope usage)	
<b>Tripod thread</b>	Dual thread 3/8" and 1/4"	
<b>Software</b>	ProgRes <sup>®</sup> Capture Software for MS Windows <sup>®</sup> 2000/XP (TWAIN and Stand-Alone)	
<b>Hardware requirements</b>	PC: Pentium IV 1.4 GHz or better; ≥512 MB RAM; FireWire <sup>®</sup> (OHCI Standard)	
<b>Power consumption</b>	7 W	
<b>Weight</b>	800 g / 1.76 lbs	
<b>Dimensions</b>	145 x 93 x 123 mm / 5.7 x 3.6 x 4.85 in (L x W x H)	
<b>Operating conditions</b>	Temperature: +5°C to +35°C (41°F to 95°F) Humidity: 5%–80%, not condensing	

Registered in the U.S. Patent and Trademark Office.

This design and related specifications are subject to continuously ongoing development. We reserve the right to make changes in the interest of technical progress.

JENOPTIK  
Laser, Optik, Systeme GmbH  
Business Unit Sensor Systems  
07745 Jena, Germany  
Phone +49 3641 65 39 63  
progres@jenoptik.com  
www.progres-camera.com

Your direct sales agent for high-grade microscope cameras: